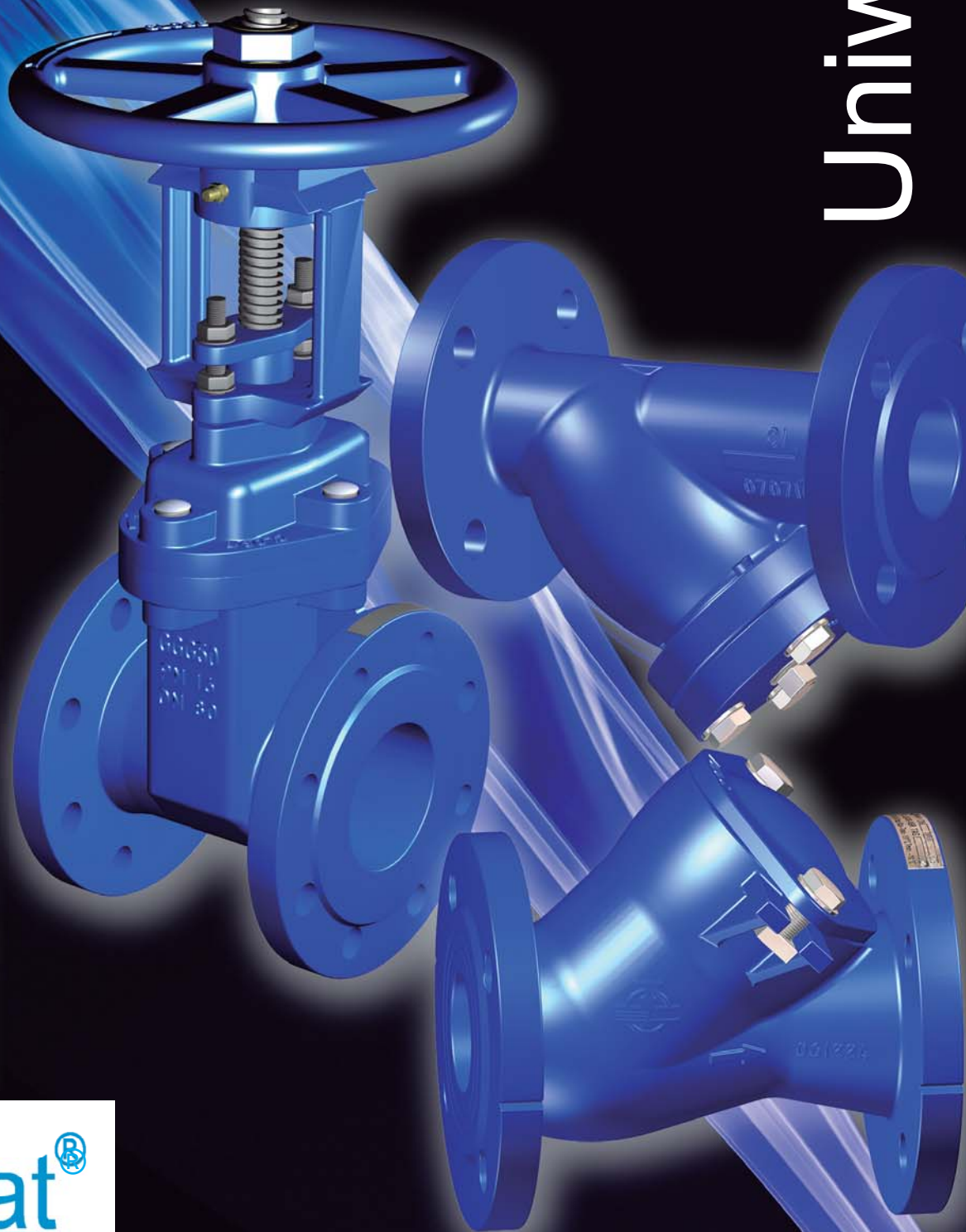


Valves for Water Works

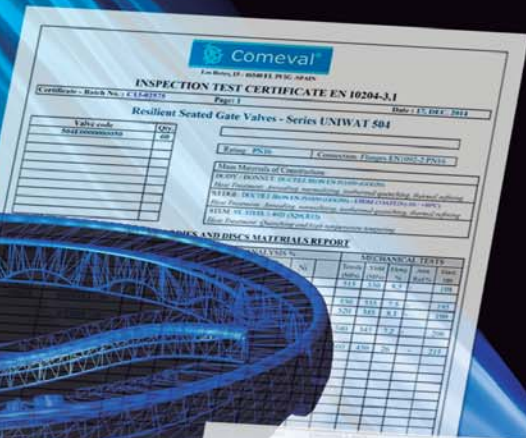
Uniwat®



Uniwat®

Why choosing the Uniwat® range of valves?

- Strictly compliant with legal regulations, safety and reliability.
- Stringent QC and traceability of materials.
- One stop shop meeting the water works valve packages within the same brand.
- Uniwat is comprehensive of Isolating Valves, Check Valves and Strainers.
- Large inventory of valves available in Spain.
- Products are specifically design to suit the application: i.e: EPOXI coating and resilient seating and sealing.



Valves designed and manufactured in compliance with PED 2014/68/EU – Module A – Cat. I
WRAS approval for drinking water, series 504/505 for EPDM sealing, standard up to DN500!



Triple O-ring stem sealing
(Gate valve)



Union bolts wax protected
(Gate valve)



Round rubber gasket on recess
in bonnet prevent blow out by
pressure surges
(Gate valve)

Uniwat® - A comprehensive portfolio of resilient seated valves for water works.

Resilient Seated Gate Valves - SERIES 504/505/507

DN40 - DN1000 / PN10-16 / Flanged to EN1092-2 type 21/B, PN16 / Marking: EN19 / Pressure Tests: EN12266-1



Standard Features:

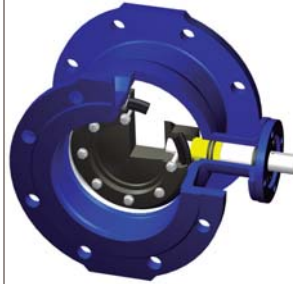
- Triple O-ring stem
- Non rising stem (504/505) rising stem (507)
- Removable bushing
- Full bore
- Rubber wedge
- Round rubber gasket on recess in bonnet
- Epoxy coat

Options:

- WRAS approval & compliance with EN 1171, EN 10704-1/2
- Higher service temperatures
- Limit switches
- Different actuation
- Lock device, chainwheel

Double Offset Butterfly Valves - SERIES VF791

DN100 - DN1200 / PN6-16 / Flanged to EN1092-2 type 21/B, PN16 / Marking: EN19 / Pressure Tests: EN12266-1



Standard Features:

- Sealing shaft design
- Metal disc
- St. steel seat embedded into the body
- Resilience sealing ring
- Shaft bushings support the disc so the valves can be installed vertically up to certain size
- Epoxy coat

Options:

- Drinking water approvals
- Higher service pressure rating and temperatures
- Other connections
- Limit switches
- Different actuation

Resilient Seated Check Valves - SERIES 3240/3141

DN32 - DN300 / PN10-16 / Flanged to EN1092-2 type 21/B, PN10/16 / Female thread to ISO 228-1 (DIN259-BSPP) / Marking: EN19 / Pressure Tests: EN12266-1



Standard Features:

- Calibrated rubber lined ball
- Bolting in St. Steel
- Unobstructed full bore, self cleaning
- Epoxy coat

Options:

- Drinking water approval & compliance with EN 10704-3

Y and T Strainers - SERIES 630W

DN15 - DN600 / PN16 / Flanged to EN1092-2 type 21/B / Marking: EN19 / Pressure Tests: EN12266-1



Standard Features:

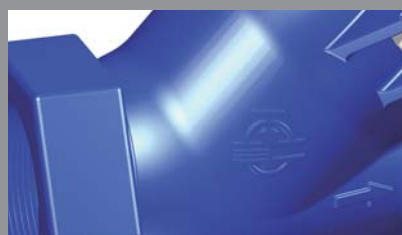
- Ample body design
- Drainage plug
- Bolted cover
- Bolting in St. Steel
- Rugged stainless steel perforated basket
- Epoxy coat

Options:

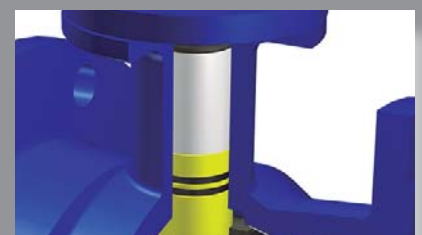
- Drinking water approval
- Higher service temperatures
- Special basket for vacuum service



Rubber wedge, excellent sealing in both directions
(Gate valve)



Epoxy coat protection for body, min. average thickness 250 µm



Optimized sealing performance.
(Double Offset Butterfly valve)

Other useful water works products available from Comeval Valve Systems:



Air Valves

Double and triple acting for clean water and sewage.



Control Valves

Self-acting style for all sort of control applications (level, flow, pressure, altitude..)



Dismantling Joints

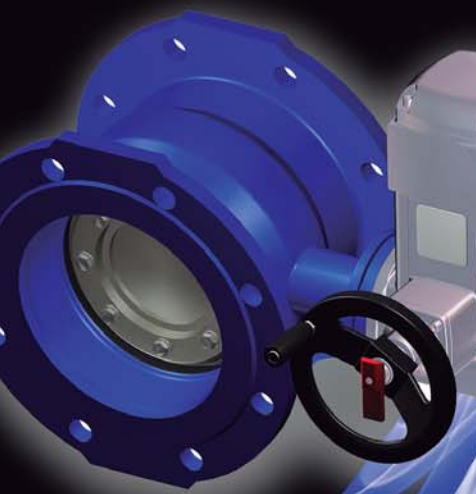
Ductile iron joints to complete piping works.

Automation and design enhancements:

Actuation Packages:

- Single and Double acting pneumatic actuators.
- Multi turn Electric actuators of any major international manufacturer.
- Control accessories.
- Hand wheel padlock and hooding designs. Wrench nut actuation.
- Silicone covered Bolts.
- Diverse mesh perforations for strainers.
- Extended spindles for underground operations.

On site and Off site after market service



Uniwat® Valves; Quality Approval as defined by PED 2014/68/EU – Annex III Module A - Cat. I

Experts on water works valve application technology; maintenance service on Dams, WWTPs, Irrigation networks and Desalination plants.

