

Butterfly Valves

Uniwat®



Uniwat®

Why choosing the Uniwat® range of Butterfly Valves?

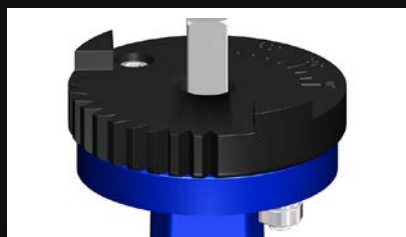
- Strictly compliant with legal regulations, safety and reliability.
- Stringent QC and traceability of materials.
- One piece stem retainer less design, double packing shaft, emission free.
- Finely machined disc edges, lower torque values.
- Wide range of styles: Wafer, Lug, U-Type and Dual Flange concentric and double offset.
- Large availability of size ranges and material combination of Body / Disc / Liner.
- A customized range of Quality and compact range of pneumatic and electric actuators.
- Large inventory of valves available in Spain



Valves designed and manufactured in compliance with PED 2014/68/EU – Module A – Cat. I
WRAS approval for drinking water, series VF700/750, stainless steel disc, EPDM seat, standard up to DN300!



Marking according to EN19, with name plate including CE marking, valve identification and batch number for full traceability purpose



Notch Plate with position indicator and locking in intermediate positions when needed



Vulcanized rubber seat, non-collapsible, stretch resistant, blow out proof

Uniwat® - A comprehensive portfolio of resilient seated Butterfly valves for HVAC, Process and Water Works

Series VF700 Wafer Style Concentric Butterfly Valves

DN 25/1200 – PN 10/16 or ASA150 – ISO 5211 –
Marking EN 19 – Pressure Tests: EN 12266-1



Materials of Construction

Body and Disc: EN-JL1040 (GG25), EN-JS1030 (GGG40), St. Steel CF8M, ASTM A216 WCB

Materials of seat liner:

EPDM, NBR, VITON, Silicon, PTFE...

Actuation: Notch lever, Worm Gear, Actuators

Standard Paint: Epoxy powder paint

Options:

- WRAS approval & compliance with EN 10704-1/2
- Silicone free execution
- Extended spindle
- Operation locking device
- Limit switches

Series VF750 Lug Style Concentric Butterfly Valves

DN 25/1000 – PN 10/16 or ASA150 – ISO 5211 –
Marking EN 19 – Pressure Tests: EN 12266-1



Materials of Construction

Body and Disc: EN-JL1040 (GG25), EN-JS1030 (GGG40), St. Steel CF8M, ASTM A216 WCB

Materials of seat liner:

EPDM, NBR, VITON, Silicon, PTFE...

Actuation: Notch lever, Worm Gear, Actuators

Standard Paint: Epoxy powder paint

Options:

- WRAS approval & compliance with EN 10704-1/2
- Silicone free execution
- Extended spindle
- Operation locking device
- Limit switches

Series VF790 Double flange Concentric Butterfly Valves

DN 25/1000 – PN 10/16 or ASA150 – ISO 5211 –
Marking EN 19 – Pressure Tests: EN 12266-1



Materials of Construction

Body and Disc: EN-JS1030 (GGG40), St. Steel CF8M, ASTM A216 WCB

Materials of seat liner:

EPDM, NBR, VITON, Hypalon, PTFE...

Actuation: Notch lever, Worm Gear, Actuators

Standard Paint: Epoxy powder paint

Options:

- Compliance with EN 10704-1/2
- Silicone free execution
- Extended spindle
- Operation locking device
- Limit switches

Series VF7U0 Double Flange U-Type Concentric Butterfly Valves

DN 150/1200 – PN 10/16 or ASA150 – ISO 5211 – Marking EN 19 –
Pressure Tests: EN 12266-1



Materials of Construction Body and Disc: EN-JL1040 (GG25), EN-JS1030 (GGG40), St. Steel CF8M, ASTM A216 WCB

Materials of seat liner: EPDM, NBR, VITON, Silicon, PTFE...

Actuation: Notch lever, Worm Gear, Actuators

Standard Paint: Epoxy powder paint

Options:

- Compliance with EN 10704-1/2
- Silicone free execution
- Extended spindle
- Operation locking device
- Limit switches

Series VF791 Double Flange Double Eccentric Butterfly Valves

DN 100/1200 – PN 10/16 – ISO 5211 – Flanges EN1092-2 type 21/B,
PN16 – Marking EN 19 – Pressure Tests: EN 12266-1



Materials of Construction Body and Disc: EN-JS1030 (GGG40), St. Steel CF8M, ASTM A216 WCB

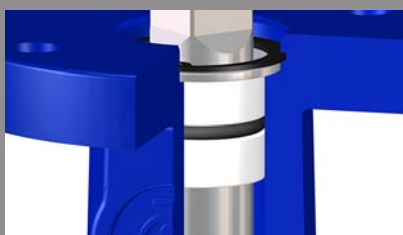
Materials of sealing ring: EPDM, NBR, VITON, Hypalon, Heat EPDM...

Actuation: Worm Gear, Actuators

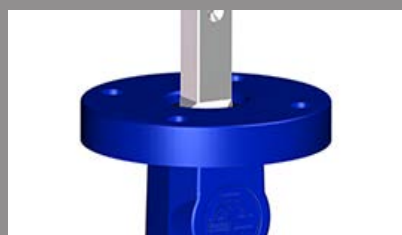
Standard Paint: Epoxy powder paint

Options:

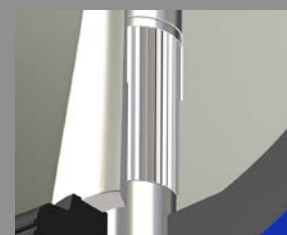
- Drinking water approvals
- Higher service pressure rating and temperatures
- Other connections
- Limit switches



O-ring safety shaft sealing, with retaining washer to ensure proper working under pressure



Top Mounting Arrangement; top flange to suit actuators as per ISO 5211 standard

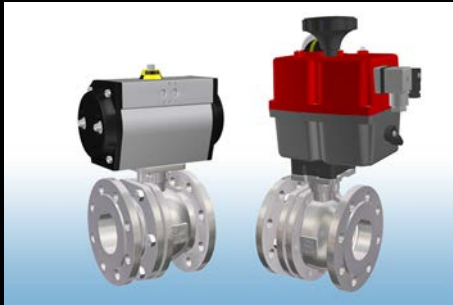


Shaft disc threaded union (up to DN300); disc offers clean surface against the fluid

Other Styles and Options:



**VF 775 - Split body design;
PTFE encapsulated disc**



**Control accessories; limit
switch boxes, solenoids and
others**



Stem extension

Automation and design enhancements:

On site and Off site after market service

Series CMVL Actuators

Series CMVL T Series Quarter Turn Pneumatic Actuator

- ISO 5211 / DIN 3337
- Rack and Pinion type
- Visual indicator
- Extruded aluminum shell
- Corrosion resistance spring cartridges
- Anti-blow out system of pinion
- Diverse design options

Series CMVL L/H Series Quarter Turn Electric Actuator

- ISO 5211 / DIN 3337
- Emergency override hand wheel
- Visual indicator
- Electronic torque limiter
- Auto adjustable temperature control
- Free volt switch contacts
- PES protected electric supply
- Diverse design options



We provide engineering application on installation and pipework layout upon request. Our support also includes general arrangement drawings, fluid compatibility tables, Operating and Maintenance Instructions and Certificates

We assembly different actuator brands and styles acc. to customer's specifications



Uniwat® Valves; Quality Approval as defined by PED 2014/68/EU – Annex III Module A-Cat I