

Al Rawan Company

شركة الروان

CONTROL PANEL BOARDS DIVISION



Electrical & Panels Dept.:
+961 7 221 799, +961 70 853 544
Company Headquarters:
+961 7 730 613
info@al-rawan.com
www.al-rawan.com

Contracting - Trading - Maintenance - Control Panel Boards -
Instrumentation & Control - Automation - Pumps & Motors - Electrical
Motors - Chlorination System - Earthing & Lighting - Valves & Pipes -
Circuit Breakers - Contactors - Industrial Electrical Enclosures



*This profile is for Al - Rawan's
Control Panel Board Division.*

Al-Rawan is a general contracting and trading company with many divisions: mechanical, civil and electrical contracting and trading division.

- **The mechanical part focuses on water projects and pumping stations.**
- **The civil part focuses on construction and pipe lines installation.**
- **The electrical part focuses on panel boards projects and trading of industrial electrical suppliers including Fuji Electric, Japan, for contactors and circuit breakers, ETA, Italy, for enclosures, EL.CO, Italy, for automation and digital controllers and many more high quality manufacturers.**

Al-Rawan has its professional panel building division specializing in all types of low voltage electrical switchboards up to the highest standards of production and testing. Type-Tested panels are also assembled upon project requirement.

✓ **Motor Control Centers (MCC)**

MCC is an assembly of one or more enclosed sections having a common power bus containing motor control units including:

- Soft Starters • Variable Frequency Drives (VFD) • Star-Delta Starters
- Auto-transformer Starters • Direct Online Starters.

✓ **Automatic Transfers Switch Panels (ATS)**

Designed to switch between two power sources, the main source and a backup source usually a generator set.

✓ **Synchronizing Panels**

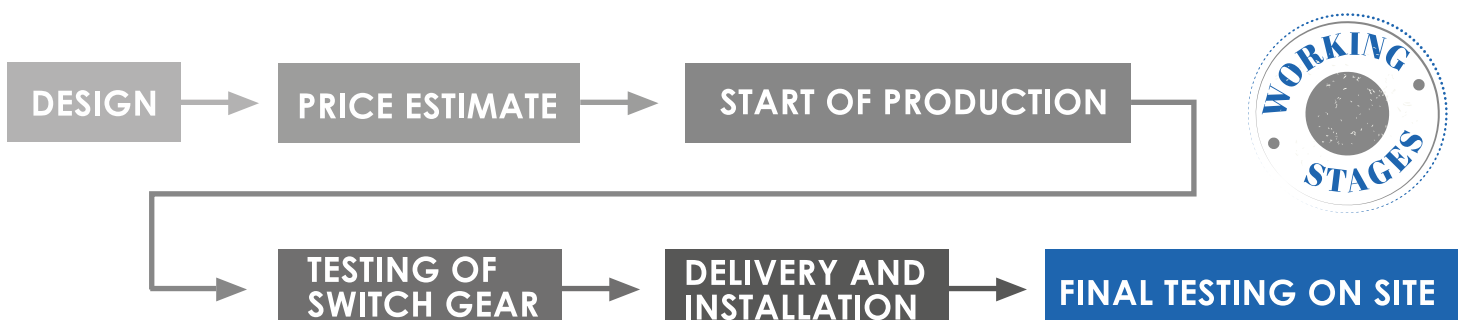
Running many generators in parallel by matching the speed and frequency, for supplying the amount of power needed.

✓ **Distribution Boards**

Including main distribution boards (MDB), sub-main distribution boards (SMDB) and distribution and lighting boards (DB and LP).

✓ **Capacitor Banks & Power Factor Correction**

Panel consisting of connected capacitors to increase the power factor thus improving the stability and efficiency of the network.



Projects and Works

Al-Hariri Pumping Station

3 MCC's 200A/250A/325A,
MDB 1200A, ATS 1200A.

Al-Fawwar Pumping Station

3 MCC's 150A/150A/250A,
MDB 1000A, ATS 1000A, ATS
200A for building.

“ ” INNOVATION
TEAMWORK
CREATIVITY



Initial works, start of production and fixing of components



Finalizing the panels



Testing of the panels in the workshop in the presence of the client/consultant



Delivery of panels to site.



OuadiJilo & Batoulay Pumping Stations funded by USAID:

- 20 softstarter MCC's 800A,
- 8 star-delta MCC's 400A,
- 4 ACB for 2 ATS systems 3200A,
- 7 DB's 40A.



Tuffahta Station:

- 7 MCCs 600A,
- 3 MCCs 800A,
- 3 1600A MDBs for MCCs,
- ATS 5000A,
- 5 DBs 25A.



Electrical Control Panel includes 6 ATS 12A



PLC Controlled MCC 250A



Ras Al Ain Station:

- 2 MCCs 800A,
- 1600A MDB for MCC's,
- 3 MCCs 400A,
- 3 1200A MDBs for MCCs,
- 2 DBs 25A.

Copper Busbar works

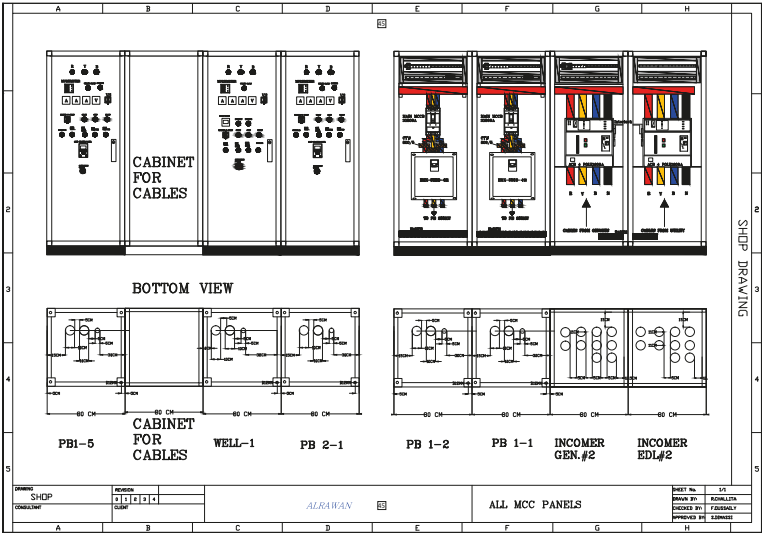


- Hasbani/Hasbayya Station:
- 3 MCCs 400A,
 - 1200A MDB for MCC's,
 - 3 MCCs 50A,
 - 4 DBs 40A.

PLC controlled panel board with HMI showing statuses for 5 motors



Panel Boards delivery, check and testing by client/consultant



Shop Drawings- Mandatory design step before start of work

SomePanel Boards Projects Accomplished in 2015 & 2016

Project Title & Description of Activities	Client
Rafik Hariri Pumping Station in Saida: 3 MCC's 200A/250A/325A, MDB 1200A, ATS 1200A	CARE FRANCE
Fawwar Pumping Station in Saida: 3 MCC's 150A/150A/250A, MDB 1000A, ATS 1000A, ATS 200A for building.	CARE FRANCE
Assi Villa and Farms: ATS 250 A, MDB Panel 250A, Synchronization panel for 2 gensets 300kVA.	PRIVATE
Synchronization Panel for 2 generators 250kVA and 500kVA for DACOM Company.	DACOM
Electrical Control panels for Khawle Building: 16 ATS 25 A, MDB Panel 500A.	PRIVATE
Tuffahta Station: 7 MCCs 600A, 3 MCCs 800A, 3 1600A MDBs for MCCs, ATS 5000A, 5 DBs 25A.	UNICEF
HACHEM FACTORY – South Lebanon. Power plant composed of two 250KVA Gensets with synchronizing system.	PRIVATE
Ras Al Ain Station: 2 MCCs 800A, 1600A MDB for MCC's, 3 MCCs 400A, 3 1200A MDBs for MCCs, 2 DBs 25A.	UNICEF
Electrical Control panels for Khalifeh buildings compound (4 buildings): 32 ATS 40 A, 4 MDB Panel 350A.	PRIVATE
Medrar Station including: 4 MCCs 100A, ATS 400A	UNICEF
Synchronization Panel for 2 generators 400kVA for KPG Generators Company	KPG for Energy
PLC Controlled MCCs for pumping stations in South and North Lebanon. 12 Panels ranging from 125A to 400A	UNICEF
Hasbani/Hasbayya Station: 3 MCCs 400A, 1200A MDB for MCC's, 3 MCCs 50A, 4 DBs 40A	UNICEF
Power plant composed of two 550KVA Gensets with synchronizing system in CYPRUS.	PRIVATE
Ouadi Jilo & Batoulay Pumping Stations funded by USAID: 20 MCC's 800A , 8 MCC's 400A, 4 ACB for 2 ATS systems 3200A, 7 DB's 40A.	USAID
Electrical Control Panels for Phoenicia University, South of Lebanon including MDBs, DPs, ATS systems.	Phoenicia University
Fanar Buildings including: 32 ATS 32 A, MDB Panel 800A.	PRIVATE
Electrical Control panels for South and North Lebanon 6 MCCs ranging from 100A to 350A.	Mercy Corps
12 ATS Systems 1200 A with 2 synchronizing panels 500kVA gensets.	Congo